



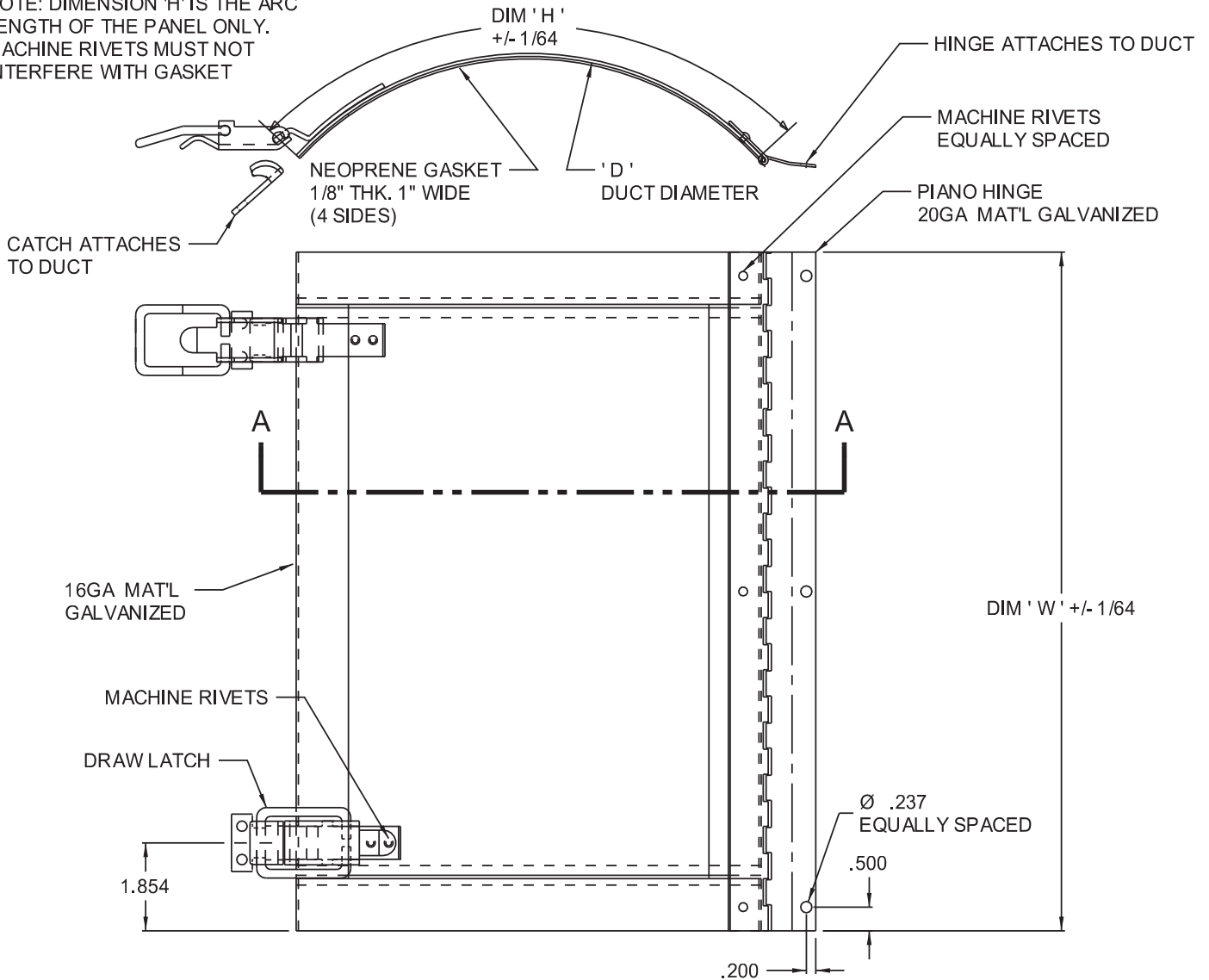
www.acudor.com  
 U.S.A.: info@acudor.com / 800.722.0501  
 CANADA: info@acudor.ca / 844.228.3671  
 INTERNATIONAL: info@acudorintl.com  
 (905) 428.2240

# RD-5090

## DOOR FOR ROUND DUCT

QTY.	NOMINAL SIZE	DIM 'W'	DIM 'H'	DIM 'D'	lbs.	kg.	DRAW LATCH
	7 X 5 (175 X 125)	7.00 (175)	5.00 (125)	4"	1-1/4	.6	2
	7 X 5 (175 X 125)	7.00 (175)	5.00 (125)	6"	1-1/4	.6	2
	9 X 8 (225 X 200)	9.00 (225)	8.00 (200)	8"	1-3/4	.8	2
	11 X 9 (275 X 225)	11.00 (275)	9.00 (225)	10"	3	1.2	2
	13 X 10 (325 X 250)	13.00 (325)	10.00 (250)	12"	3-1/2	1.6	2
	15 X 13 (375 X 325)	15.00 (375)	13.00 (325)	14"	4	1.8	3
	17 X 13 (425 X 325)	17.00 (425)	13.00 (325)	16"	5-1/2	2.5	3
	19 X 15 (475 X 375)	19.00 (475)	15.00 (375)	18"	6	2.7	3
	19 X 17 (475 X 425)	19.00 (475)	17.00 (425)	20"	6-3/4	3.1	3
	20 X 17 (500 X 425)	20.00 (500)	17.00 (425)	24"	7-1/4	3.3	3

NOTE: DIMENSION 'H' IS THE ARC LENGTH OF THE PANEL ONLY. MACHINE RIVETS MUST NOT INTERFERE WITH GASKET



STANDARD FEATURES: DRAW LATCH, CONTINUOUS PIANO HINGE, GALVANIZED STEEL, MILL FINISH

JOB NAME:

APPROVED BY:

CUSTOMER:

DATE: